

**REPORT TO:** Health and Wellbeing Board  
**DATE:** 4 October 2017  
**REPORTING OFFICER:** Director of Public Health  
**PORTFOLIO:** Public Health  
**SUBJECT:** Integrated Cold Weather Plan 2017/18  
**WARD(S)** Borough-wide

**1.0 PURPOSE OF THE REPORT**

1.1 The report presents an the Halton Integrated Cold Weather Plan which highlights the local public health plan to prepare for, alert people and prevent major avoidable effects during severe cold weather episodes.

**2.0 RECOMMENDATION: That the Health and Wellbeing Board note the content of the Integrated Cold Weather Plan.**

**3.0 SUPPORTING INFORMATION**

**3.1 Background**

Winter weather and snow also associated with an increase in illnesses and injuries. Cold weather increases the risk of heart attacks, strokes, lung illnesses, flu and other diseases. People slip and fall in the snow or ice, suffering serious injuries. Some groups, such as older people, very young children and people with pre-existing medical conditions, are particularly susceptible to the effects of very cold weather.

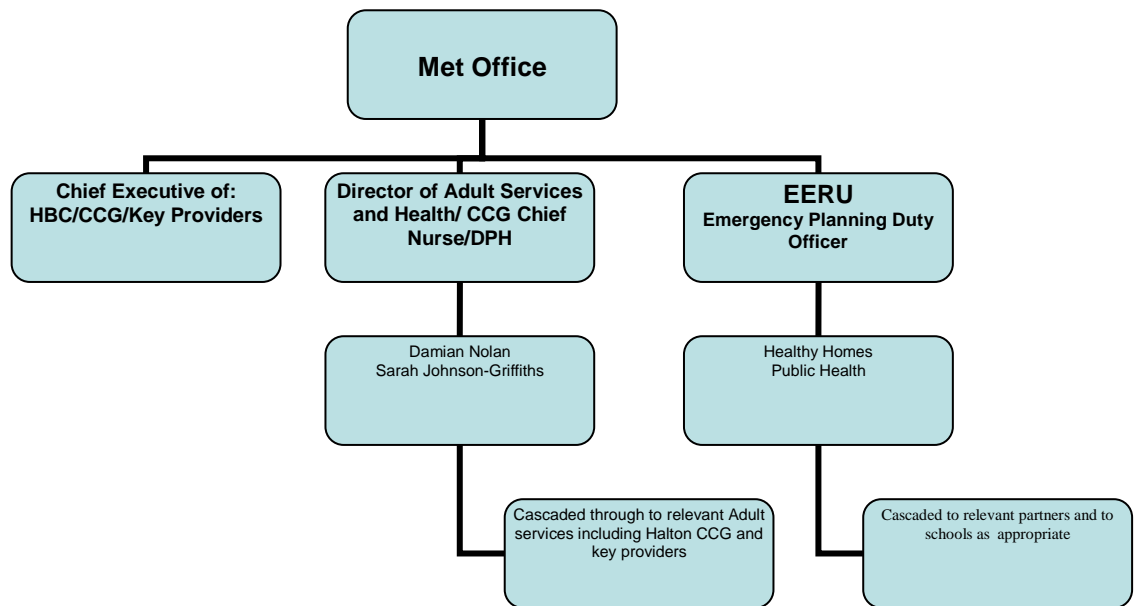
The Halton Borough Council Cold Weather Plan 2017/18 links with severe weather plans within Halton CCG and key provider organisations. It aims to capture the work that is undertaken by Halton Borough Council with regard to prevention and awareness activity for Cold Weather. It details the cascade arrangements for the cold weather alerts that are received from the met office as part of the Cold Weather Plan for England and details the actions that will be carried out by the council as each of these levels are triggered.

**3.2 Cold Weather Alerts**

Cold weather alerts are issued by the Met office and trigger changes in planning level and activities that need to take place in response to the threat of cold weather. The alert levels and activities required at each level are details within the plan.

3.3 Alerts will be cascaded across the relevant departments. It is important that Cold Weather alerts from the Met Office circulated to managers of relevant services and frontline officers, who can take action to ensure that cold weather

health impacts are minimised in a timely manner. The cascade mechanism for Halton Borough Council and to Halton Borough Council service providers is highlighted below.



### 3.4 Action Cards

The plan lays out the actions required at each Alert level by the Council and by specific departments as required, e.g. Adult services and health, Children and Young Peoples services, and by the broader partners e.g., hospitals and care homes.

### 4.0 **POLICY IMPLICATIONS**

4.1 Flu preparedness is assessed by NHS England and evidence of preparedness is requested by CQC. Failing to prepare for cold weather incidents can have a significant impact on service continuity, and increase demand on resource during winter pressures.

### 5.0 **OTHER/FINANCIAL IMPLICATIONS**

5.1 There will be financial implications in failing to plan for, and respond in a timely manner to anticipated cold weather episodes as this can place significant pressure of services during higher demand periods.

### 6.0 **IMPLICATIONS FOR THE COUNCIL'S PRIORITIES**

#### 6.1 **Children & Young People in Halton**

Children can suffer significant adverse consequences as a result of cold weather, and children's services must be prepared to alert and respond as appropriate.

- 6.2 **Employment, Learning & Skills in Halton**  
Cold weather episodes can result in difficulties in access to travel and transport and can result in capacity and staffing issues.
- 6.3 **A Healthy Halton**  
Cold weather has a significant health effect, particularly on the most vulnerable members of our community. Cold weather results in significant increased demand on health and care services.
- 6.4 **A Safer Halton**  
  
Cold weather results in significant increases in slips and falls and traffic collisions.
- 6.5 **Halton's Urban Renewal**  
  
None specified
- 7.0 **RISK ANALYSIS**
- 7.1 *Failing to adequately implement the plan and protect our community and services puts the population and service providers at significant risk of the consequences of cold weather.*
- 8.0 **EQUALITY AND DIVERSITY ISSUES**
- 8.1 The strategy is developed in line with all equality and diversity issues within Halton.
- 9.0 **LIST OF BACKGROUND PAPERS UNDER SECTION 100D OF THE LOCAL GOVERNMENT ACT 1972**  
  
None.